



Expertise Applied | Answers Delivered



## HIGH-SPEED (SEMICONDUCTOR) FUSES CATALOG



# POWR-SPEED™ Products



### Littelfuse App!

Download our free  
Littelfuse Catalogs  
and Literature App to  
keep our products and  
technical resources at  
your finger tips!



## A Broad Portfolio of Circuit Protection Products, Relays and Controls

### Fuses & Holders

- UL Class Fuses
- Medium Voltage Fuses
- High-Speed Fuses
- UL Class Fuse Blocks
- Dead-Front Fuse Holders
- Indicating Products
- Power Distribution Blocks
- OEM Custom Products

### Relays & Controls

- Ground-Fault Protection
- Trailing Cable Protection
- Resistance Grounding
- Motor & Pump Protection
- Arc-Flash Protection
- Generator Controls
- Engine Control & Diagnosis
- Custom Products

### Technical & Safety Resources

- Datasheets
- White Papers
- CAD Drawings
- Electrical Curves
- Training Videos
- Technical Articles
- High Power Test Lab
- Technical Hotline

# TABLE OF CONTENTS



## INTRODUCTION

POWR-SPEED™ High-Speed Semiconductor Fuses.....	2
---	---

## POWR-SPEED™ PRODUCTS

### High-Speed Round-Body Fuses

L50QS Series.....	4
L70QS Series.....	7
L50S Series.....	10
L70S Series.....	12
Traditional.....	14

### High-Speed Fuse Blocks

LSCR Series.....	16
------------------	----

## FAST-ACTING PRODUCTS

### UL Class L

LDC Series POWR-PRO® Fuses.....	18
---------------------------------	----

### UL Class J

JLS Series Fuses.....	19
LF Series Fuse Blocks.....	20

### UL Class T

JLLN / JLLS Series Fuses.....	21
LF Series Fuse Blocks.....	22

### UL Class CC / Midget

KLKR / KLKD Series Fuses.....	23
LPSC / LPSM POWR-SAFE Fuse Holders.....	24

### Telecommunications

L17T Series Telcom Power Fuses.....	25
TLS Series Telcom Power Fuses.....	25

### Solar Rated Products

#### 1000 V Rated

SPF Series Solar Fuses.....	26
SPFI Series In-Line Solar Fuses.....	26
LPHV POWR-SAFE Fuse Holders.....	27
SPFJ Series Solar Fuses.....	28
LFJ1000 Series Solar Fuse Block.....	29

#### 1500 V Rated

SPXV Series Solar Fuse.....	29
SPXI Series In-Line Solar Fuse.....	30
LPXV TOUCH-SAFE Fuse Holders.....	31

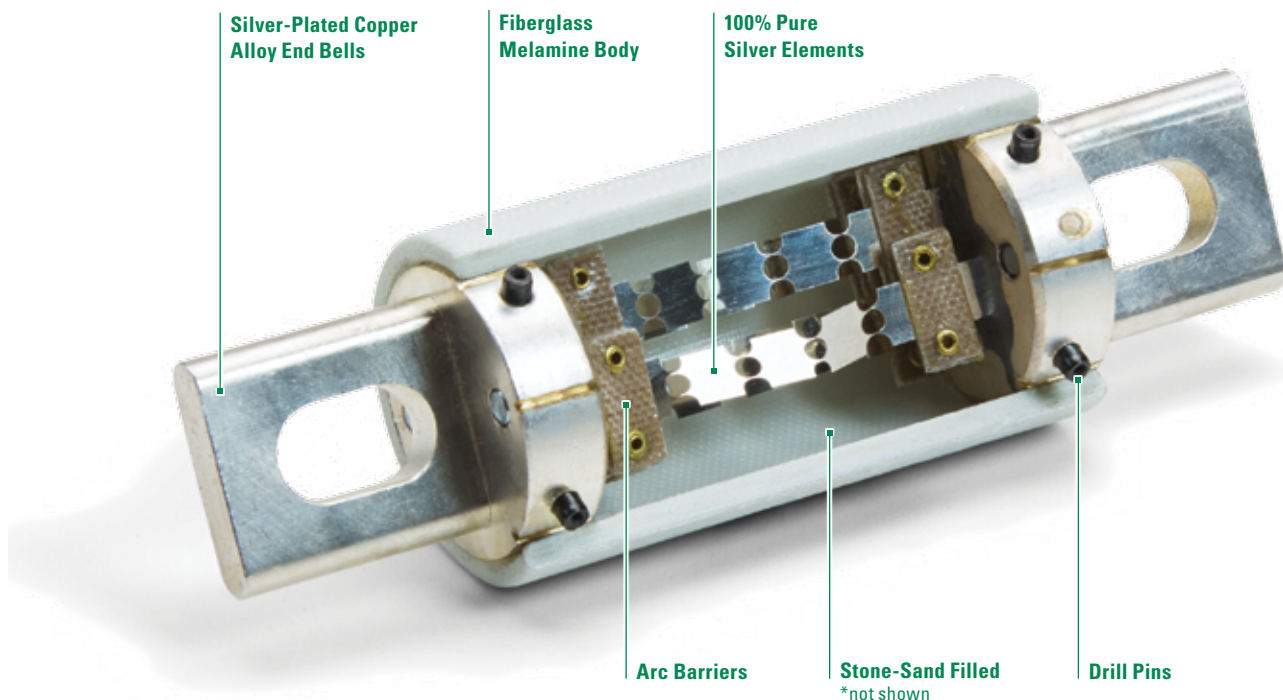
## CROSS REFERENCE GUIDE

High-Speed Fuse Cross Reference.....	32
--------------------------------------	----

# Introducing

# **POWR-SPEED™**

# High-Speed



## OPTIMIZED FOR PERFORMANCE AND EFFICIENCY

These certified high-speed fuses are optimized for performance and efficiency to better protect your critical power semiconductors against short circuits. How is POWR-SPEED better? Backed by 40 years experience, Littelfuse engineered the POWR-SPEED fuses with a reliable bridge design, quenching material and element to provide fast, extreme current limitation exactly where you need it.

The POWR-SPEED High-Speed Fuses are easy to retrofit as drop-in replacements where similar products are currently being used. The current line delivers the traditional North American round-body styles. Custom designs are available if you need a specific fuse for your application. Call us. Our engineers are eager to partner with you before, during, and long after the design process to meet your specific needs.

# Semiconductor Fuses



*Square Body  
Coming Soon!*

Features	Benefits
Extremely Current Limiting	Reduces peak let-through current
Low Watt Loss Values	Saves energy wasted during operation
Arc-Barrier Technology	Specially designed to minimize impact of arc-voltage and improve semiconductor lifecycle
Resilient Labeling	Laser etched resistance values eliminate labels that erode over time
Universal Mounting	Quick and easy field replacement
Optimized Design	Better energy efficiency and improved protection levels

# L50QS SERIES HIGH-SPEED ROUND-BODY FUSES

500 Vac/dc • 35-800 A • Traditional Round-Body Bolted Style



## Description

The L50QS Series is a next generation High-Speed Fuse for the protection of power semiconductor devices and is designed in the Traditional North American Bolted Style package.

L50QS Series High-Speed Fuses are extremely current limiting and are used to protect power converters, drives and control circuit applications. Designed with lower  $I^2t$  performance characteristics, these fuses provide balanced performance to extend longevity while lowering potentially damaging heat energy to the devices being protected.

In addition L50QS Series fuses have been designed with a universal mounting option to meet customer requirements for installation into a variety of application configurations

Littelfuse POWR-SPEED™ products offer optimized circuit protection at the extremely fast speed required to protect modern day, sensitive, high-power semiconductor devices. Such products are commonly found in various industries including pulp and paper industries, cranes and heavy-lifting equipment, processing industries, wastewater treatment plants and large factories and MRO facilities.

## Features/Benefits

- Compliance with US and Canadian Requirements
- Traditional North American Bolted Style dimensions
- Class aR performance
- Direct bus-bar mount or stud mount design
- RoHS and REACH Compliant

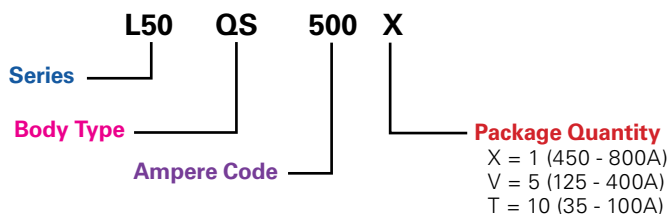
## Applications

- Power Converters (Inverters, Rectifiers)
- Power Supplies
- UPS
- Variable Speed Drives
- Control Circuits
- Soft Starters

## Specifications

<b>Voltage Rating</b>	AC: 500V DC: 500V
<b>Amperage Rating</b>	35 - 800
<b>Interrupting Rating</b>	AC: 200 kA DC: 50 kA
<b>Material</b>	Body: Melamine Caps: Copper Alloy (Silver Plated)
<b>Approvals</b>	UL Recognized (E71611) c-UR-us (E71611)
<b>Environmental</b>	RoHS Compliant, REACH
<b>Country of Origin</b>	Mexico

## Part Numbering System



SERIES	BODY TYPE	AMPERE CODE	PACKAGE QUANTITY	CATALOG NUMBER	ORDERING NUMBER
L50	QS	500	1	L50QS500	L50QS500.X

## Recommended Fuse Blocks

LSCR001 (35-200 A)  
LSCR002 (225-800 A)



## Web Resources

Download technical documents: [littelfuse.com/L50QS](http://littelfuse.com/L50QS)

# L50QS SERIES HIGH-SPEED ROUND-BODY FUSES

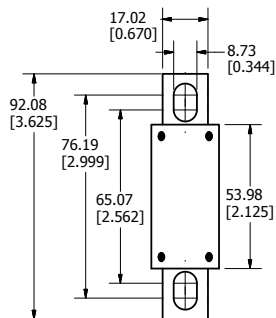
## Electrical Specifications

CATALOG NUMBER	AMPERAGE RATING	VOLTAGE RATING		INTERRUPT RATING		MELTING (PRE-ARC) I <sup>2</sup> T (A <sup>2</sup> s)	TOTAL CLEARING I <sup>2</sup> T (A <sup>2</sup> s)	TOTAL CLEARING I <sup>2</sup> T (A <sup>2</sup> s)	WATTS LOSS AT 80% RATED CURRENT	WATTS LOSS AT 100% RATED CURRENT
		AC	DC	AC	DC		200 kA @ 500 Vac	50 kA @ 500 Vdc	(W)	(W)
L50QS035	35	500	500	200kA	50kA	111	430	290	3	5
L50QS040	40	500	500	200kA	50kA	137	530	363	3	9
L50QS050	50	500	500	200kA	50kA	211	770	516	5	8
L50QS060	60	500	500	200kA	50kA	269	1,500	881	5	9
L50QS070	70	500	500	200kA	50kA	393	1,775	1,185	6	11
L50QS080	80	500	500	200kA	50kA	616	3,550	1,720	6	11
L50QS090	90	500	500	200kA	50kA	720	4,075	1,990	8	14
L50QS100	100	500	500	200kA	50kA	905	4,577	2,313	9	17
L50QS125	125	500	500	200kA	50kA	1,503	7,655	4,815	10	17
L50QS150	150	500	500	200kA	50kA	2,382	11,100	7,190	12	21
L50QS175	175	500	500	200kA	50kA	3,148	16,500	9,900	14	25
L50QS200	200	500	500	200kA	50kA	4,102	18,233	11,567	17	32
L50QS225	225	500	500	200kA	50kA	5,379	25,300	16,700	19	35
L50QS250	250	500	500	200kA	50kA	7,094	31,350	22,500	20	37
L50QS300	300	500	500	200kA	50kA	11,240	53,800	36,150	25	46
L50QS350	350	500	500	200kA	50kA	14,246	68,850	44,800	30	61
L50QS400	400	500	500	200kA	50kA	21,155	100,300	67,300	33	65
L50QS450	450	500	500	200kA	50kA	26,425	121,000	84,650	35	63
L50QS500	500	500	500	200kA	50kA	31,747	141,000	103,500	39	72
L50QS600	600	500	500	200kA	50kA	43,922	193,500	128,000	49	92
L50QS700	700	500	500	200kA	50kA	75,597	314,000	230,000	51	92
L50QS800	800	500	500	200kA	50kA	92,717	393,500	280,000	63	117

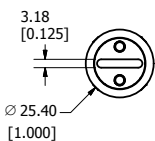
# L50QS SERIES HIGH-SPEED ROUND-BODY FUSES

## Dimensions Millimeters [inches]

Document Number: OL-L50QS000

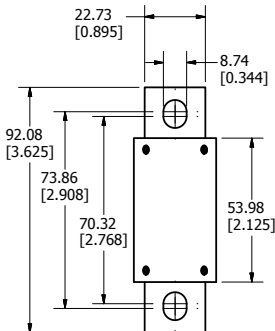


**35-100A**

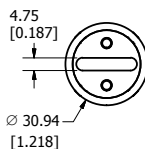


**Stud Size:** M8 (5/16")

**Recommended Torque:** 15 Nm (132.76 in-lb)

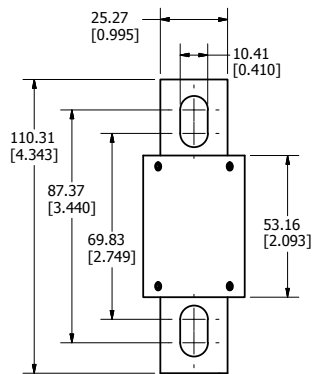


**125-200A**

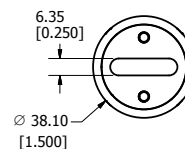


**Stud Size:** M8 (5/16")

**Recommended Torque:** 15 Nm (132.76 in-lb)

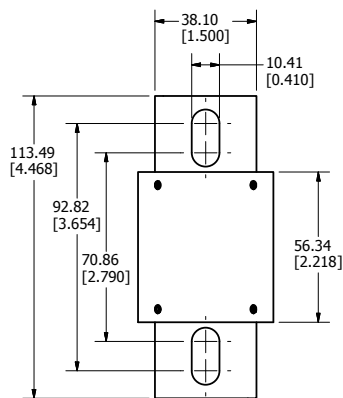


**225-400A**

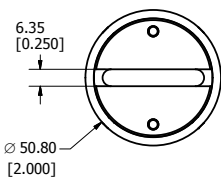


**Stud Size:** M8 (5/16")

**Recommended Torque:** 15 Nm (132.76 in-lb)

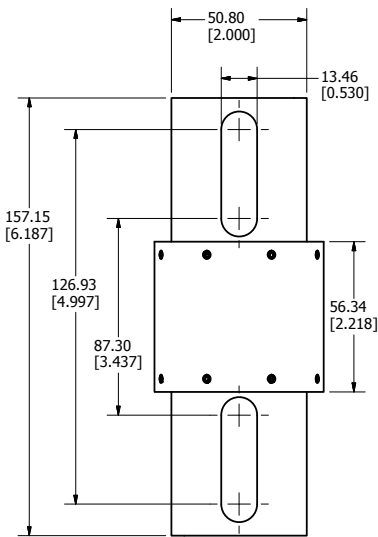


**450-600A**

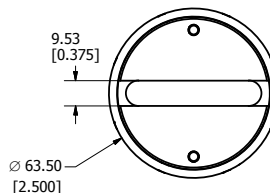


**Stud Size:** M8 (5/16")

**Recommended Torque:** 15 Nm (132.76 in-lb)



**700-800A**



**Stud Size:** M12 (1/2")

**Recommended Torque:** 54 Nm (477.94 in-lb)

# L70QS SERIES HIGH-SPEED ROUND-BODY FUSES

700 Vac/dc • 35-800 A • Traditional Round-Body Bolted Style



## Description

The L70QS Series is a next generation High-Speed Fuse for the protection of power semiconductor devices and is designed in the Traditional North American Bolted Style package.

L70QS Series High-Speed Fuses are extremely current limiting and are used to protect power converters, drives and control circuit applications. Designed with lower  $I^2t$  performance characteristics, these fuses provide balanced performance to extend longevity while lowering potentially damaging heat energy to the devices being protected.

In addition L70QS Series fuses have been designed with a universal mounting option to meet customer requirements for installation into a variety of application configurations

Littelfuse POWR-SPEED™ products offer optimized circuit protection at the extremely fast speed required to protect modern day, sensitive, high-power semiconductor devices. Such products are commonly found in various industries including pulp and paper industries, cranes and heavy-lifting equipment, processing industries, wastewater treatment plants and large factories and MRO facilities.

## Features/Benefits

- Compliance with US and Canadian Requirements
- Traditional North American Bolted Style dimensions
- Class aR performance
- Direct bus-bar mount or stud mount design
- RoHS and REACH Compliant

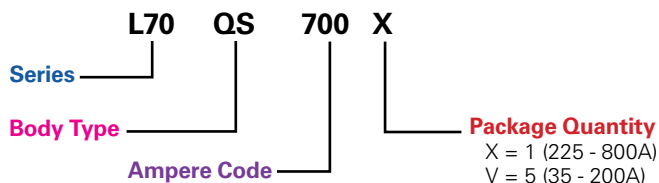
## Applications

- Power Converters (Inverters, Rectifiers)
- Power Supplies
- UPS
- Variable Speed Drives
- Control Circuits
- Soft Starters

## Specifications

<b>Voltage Rating</b>	AC: 700V DC: 700V
<b>Amperage Rating</b>	35 - 800
<b>Interrupting Rating</b>	AC: 200 kA DC: 50 kA
<b>Material</b>	Body: Melamine Caps: Copper Alloy (Silver Plated)
<b>Approvals</b>	UL Recognized (E71611) c-UR-us (E71611)
<b>Environmental</b>	RoHS Compliant, REACH
<b>Country of Origin</b>	Mexico

## Part Numbering System



SERIES	BODY TYPE	AMPERE CODE	PACKAGE QUANTITY	CATALOG NUMBER	ORDERING NUMBER
L70	QS	700	1	L70QS700	L70QS700.X

## Recommended Fuse Blocks

LSCR001 (35-100A)  
LSCR002 (125-800A)



## Web Resources

Download technical documents: [littelfuse.com/L70QS](http://littelfuse.com/L70QS)

# L70QS SERIES HIGH-SPEED ROUND-BODY FUSES

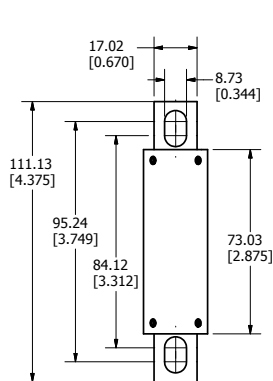
## Electrical Specifications

CATALOG NUMBER	AMPERAGE RATING	VOLTAGE RATING		INTERRUPT RATING		MELTING (PRE-ARC) I <sup>2</sup> T (A <sup>2</sup> s)	TOTAL CLEARING I <sup>2</sup> T (A <sup>2</sup> s)	TOTAL CLEARING I <sup>2</sup> T (A <sup>2</sup> s)	WATTS LOSS AT 80% RATED CURRENT	WATTS LOSS AT 100% RATED CURRENT
		AC	DC	AC	DC		200 kA @ 500 Vac	50 kA @ 500 Vdc	(W)	(W)
L70QS035	35	700	700	200kA	50kA	129	332	308	5	8
L70QS040	40	700	700	200kA	50kA	153	599	416	6	9
L70QS050	50	700	700	200kA	50kA	196	711	588	6	12
L70QS060	60	700	700	200kA	50kA	269	1,233	678	9	15
L70QS070	70	700	700	200kA	50kA	359	1,575	1,075	10	20
L70QS080	80	700	700	200kA	50kA	452	2,755	1,415	12	22
L70QS090	90	700	700	200kA	50kA	625	3,365	1,920	13	25
L70QS100	100	700	700	200kA	50kA	966	3,747	2,347	15	30
L70QS125	125	700	700	200kA	50kA	2,208	8,795	5,570	13	24
L70QS150	150	700	700	200kA	50kA	3,026	13,650	8,195	17	32
L70QS175	175	700	700	200kA	50kA	4,219	19,550	11,650	20	38
L70QS200	200	700	700	200kA	50kA	5,529	22,067	16,100	22	42
L70QS225	225	700	700	200kA	50kA	9,226	34,900	25,400	22	40
L70QS250	250	700	700	200kA	50kA	10,999	43,750	31,650	27	46
L70QS300	300	700	700	200kA	50kA	16,296	64,400	45,500	31	57
L70QS350	350	700	700	200kA	50kA	24,778	91,500	65,250	35	67
L70QS400	400	700	700	200kA	50kA	34,225	110,667	94,666	41	79
L70QS450	450	700	700	200kA	50kA	38,946	145,500	113,500	45	81
L70QS500	500	700	700	200kA	50kA	42,747	173,000	125,500	56	112
L70QS600	600	700	700	200kA	50kA	67,363	220,333	179,667	67	138
L70QS700	700	700	700	200kA	50kA	99,387	368,000	298,000	72	138
L70QS800	800	700	700	200kA	50kA	156,137	466,333	415,333	76	142

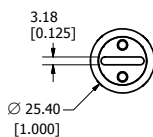
# L70QS SERIES HIGH-SPEED ROUND-BODY FUSES

## Dimensions Millimeters [inches]

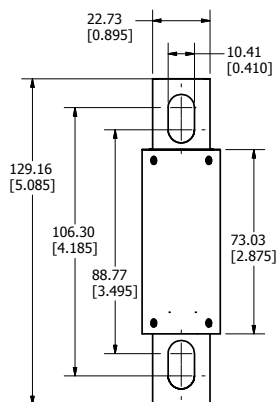
Document Number: OL-L70QS000



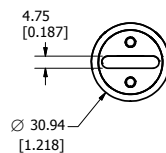
35-100A



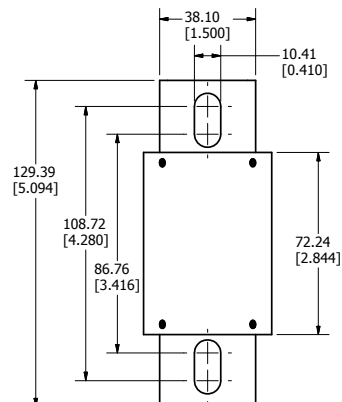
**Stud Size:** M8 (5/16")  
**Recommended Torque:** 15 Nm (132.76 in-lb)



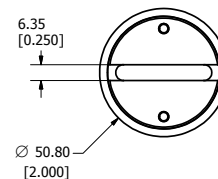
125-200A



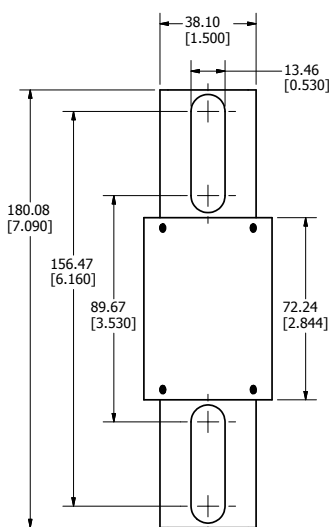
**Stud Size:** M8 (5/16")  
**Recommended Torque:** 15 Nm (132.76 in-lb)



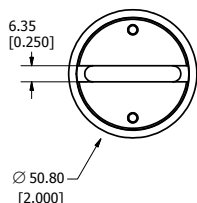
225-400A



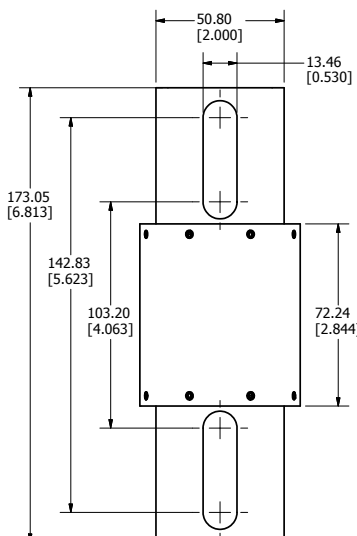
**Stud Size:** M8 (5/16")  
**Recommended Torque:** 15 Nm (132.76 in-lb)



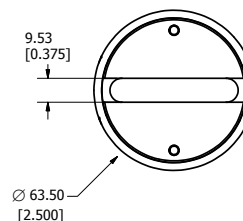
450-600A



**Stud Size:** M12 (1/2")  
**Recommended Torque:** 54 Nm (477.94 in-lb)



700-800A



**Stud Size:** M12 (1/2")  
**Recommended Torque:** 54 Nm (477.94 in-lb)

## L50S SERIES HIGH-SPEED FUSE

500 Vac • 450 Vdc • 10-800 A • Traditional Round-Body Style



### Description

Littelfuse L50S Series High-Speed Fuses are designed to protect today's equipment and systems, and are manufactured with Littelfuse-developed technology that sets standards for accuracy, consistent quality, reliability, and predictable performance.

Littelfuse engineers have redefined High-Speed Fuse Technology by using advanced metallurgical, polymer, and materials research, mathematical modeling, and computerized statistical analysis.

### Features/Benefits

- Extremely Current Limiting
- Low Watt Losses
- Controlled Transient Over-voltages
- UL Recognized

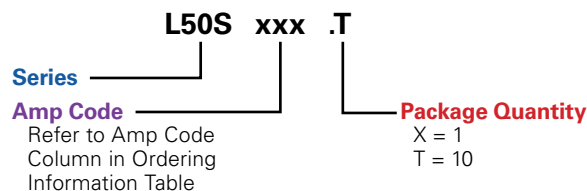
### Applications

- AC & DC Drives
- DC Common Bus Protection
- Power Converters
- UPS
- Soft-Starters

### Specifications

<b>Voltage Rating</b>	500 Vac 450 Vdc
<b>Amperage Rating</b>	10, 12, 15, 20, 25, 30, 35, 40, 50, 60, 70, 80, 90, 100, 125, 150, 175, 200, 225, 250, 275, 300, 350, 400, 450, 500, 550, 600, 700, 800
<b>Interrupting Rating</b>	AC: 200 kAIC DC: 20 kAIC
<b>Material</b>	Body: Melamine Terminals: Copper (silver plated)
<b>Mounting Type</b>	Cylindrical (10 - 30 A) Bolted Tags (35 - 800 A)
<b>Operating Temperature</b>	-55° C to +125° C
<b>Storage Temperature</b>	Up to 35° C with relative humidity less than 65%
<b>Approvals</b>	UL Recognized (File: E71611) CSA Recognized (File: LR29862)
<b>Environmental</b>	RoHS Compliant
<b>Country of Origin</b>	Mexico

### Part Numbering System



SERIES	AMP	CATALOG NUMBER	ORDERING NUMBER
L50S	10	L50S010	L50S010.T
L50S	500	L50S500	L50S500.X

### Recommended Fuse Holder

LSCR001 (35-200 A)  
LSCR002 (225-800 A)

### Web Resources

Download technical documents: [littelfuse.com/L50S](http://littelfuse.com/L50S)

# L50S SERIES HIGH-SPEED FUSE

## Electrical Specifications

CATALOG NUMBER	AMPERE RATING	VOLTAGE RATING		INTERRUPT RATING		MELTING (PRE-ARC) I <sup>2</sup> T (A <sup>2</sup> s)	TOTAL CLEARING I <sup>2</sup> T (A <sup>2</sup> s)	TOTAL CLEARING I <sup>2</sup> T (A <sup>2</sup> s)	TOTAL CLEARING I <sup>2</sup> T (A <sup>2</sup> s)	WATTS LOSS AT 100% RATED CURRENT	WATTS LOSS AT 80% RATED CURRENT
		AC	DC	AC	DC		100 kA @ 500 Vac	200 kA @ 500 Vac	20 kA @ 450 Vdc	(W)	(W)
L50S010	10	500	450	200kA	20kA	21	112	128	85	2	1
L50S012	12	500	450	200kA	20kA	26	149	170	97	2	1
L50S015	15	500	450	200kA	20kA	34	222	250	116	2	2
L50S020	20	500	450	200kA	20kA	48	363	400	143	5	3
L50S025	25	500	450	200kA	20kA	62	528	600	170	7	4
L50S030	30	500	450	200kA	20kA	77	707	820	193	10	5
L50S035	35	500	450	200kA	20kA	130	1,120	1,210	400	6	3
L50S040	40	500	450	200kA	20kA	161	1,420	1,550	525	7	4
L50S050	50	500	450	200kA	20kA	222	2,150	2,360	867	11	6
L50S060	60	500	450	200kA	20kA	259	3,016	3,300	1,287	13	7
L50S070	70	500	450	200kA	20kA	420	4,100	4,930	1,670	17	10
L50S080	80	500	450	200kA	20kA	554	5,300	6,950	2,240	19	10
L50S090	90	500	450	200kA	20kA	677	6,750	9,500	2,900	24	13
L50S100	100	500	450	200kA	20kA	807	8,273	12,600	3,626	30	16
L50S125	125	500	450	200kA	20kA	1,290	13,100	19,000	5,150	22	12
L50S150	150	500	450	200kA	20kA	2,504	19,100	26,500	6,700	27	15
L50S175	175	500	450	200kA	20kA	3,224	26,300	35,000	8,700	33	17
L50S200	200	500	450	200kA	20kA	3,938	34,233	44,583	11,297	35	19
L50S225	225	500	450	200kA	20kA	6,034	43,500	56,000	14,750	31	17
L50S250	250	500	450	200kA	20kA	7,510	54,000	69,000	19,600	36	19
L50S275	275	500	450	200kA	20kA	9,000	65,500	82,000	25,500	41	22
L50S300	300	500	450	200kA	20kA	10,808	78,500	97,500	32,200	42	23
L50S350	350	500	450	200kA	20kA	16,500	107,000	132,000	50,100	50	28
L50S400	400	500	450	200kA	20kA	22,941	142,333	169,667	72,270	58	30
L50S450	450	500	450	200kA	20kA	29,300	178,500	208,000	95,000	58	32
L50S500	500	500	450	200kA	20kA	37,000	220,000	250,000	118,000	64	35
L50S550	550	500	450	200kA	20kA	45,851	311,667	347,333	176,766	75	41
L50S600	600	500	450	200kA	20kA	45,851	311,667	347,333	176,766	98	50
L50S700	700	500	450	200kA	20kA	82,396	460,000	622,333	289,000	96	51
L50S800	800	500	450	200kA	20kA	115,656	647,667	687,500	465,590	118	60

## Dimensions

AMPERE RATING	FIGURE NO.	DIMENSIONS INCHES (MM)							
		A	B	C	D	E	F	G	H
10 – 30	1	2 (50.8)	—	½ (12.7)	9/16 (14.3)	—	—	—	—
31 – 60	2	1⅞ (41.3)	2¼ (57.2)	2½ (63.5)	3⅜ (81.0)	1⅜ (20.6)	2⅜ (18.3)	1⅜ (8.7)	⅛ (3.2)
61 – 100	3	2⅞ (54.0)	2⅞ (68.3)	3 (76.2)	3⅝ (92.1)	1 (25.4)	.670 (17.0)	1⅜ (8.7)	⅛ (3.2)
101 – 200	3	2⅞ (54.0)	2⅞ (71.4)	2⅞ (74.6)	3⅝ (92.1)	1⅜ (31.0)	.895 (22.7)	⅞ (7.9)	⅜ (4.75)
201 – 400	3	2⅞ (53.2)	2⅞ (70.6)	3⅜ (86.5)	4⅜ (110.3)	1½ (38.1)	1 (25.4)	1⅜ (10.3)	¼ (6.4)
401 – 600	3	2⅞ (56.4)	2⅞ (73.8)	3⅜ (89.7)	4⅜ (113.5)	2 (50.8)	1½ (38.1)	1⅜ (10.3)	¼ (6.4)
601 – 800	3	2⅞ (56.4)	4⅜ (108.7)	4⅜ (117.5)	6⅜ (164.3)	2½ (63.5)	2 (50.8)	1⅜ (13.5)	⅜ (9.5)

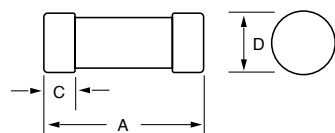


Figure 1

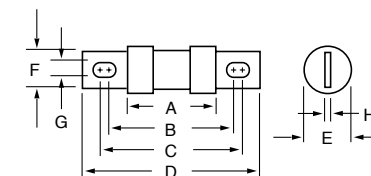


Figure 2

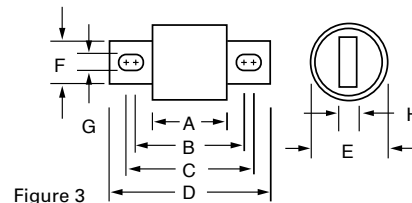


Figure 3

# L70S SERIES HIGH-SPEED FUSE

700 Vac • 650 Vdc • 10-800 A • Traditional Round-Body Style



## Specifications

<b>Voltage Rating</b>	700 Vac 650 Vdc
<b>Amperage Rating</b>	10, 15, 20, 25, 30, 35, 40, 50, 60, 70, 80, 90, 100, 125, 150, 175, 200, 225, 250, 300, 350, 400, 450, 500, 600, 700, 800
<b>Interrupting Rating</b>	AC: 200 kAIC DC: 20 kAIC
<b>Material</b>	Body: Melamine Terminals: Copper (silver plated)
<b>Mounting Type</b>	Cylindrical (10 - 30 A) Bolted Tags (35 - 800 A)
<b>Operating Temperature</b>	-55° C to +125° C
<b>Storage Temperature</b>	Up to 35° C with relative humidity less than 65%
<b>Approvals</b>	UL Recognized (File: E71611) CSA Recognized (File: LR29862)
<b>Environmental</b>	RoHS Compliant
<b>Country of Origin</b>	Mexico

## Description

Littelfuse L70S Series High-Speed Fuses are designed to protect today's equipment and systems, and are manufactured with Littelfuse-developed technology that sets standards for accuracy, consistent quality, reliability, and predictable performance.

Littelfuse engineers have redefined High-Speed Fuse technology by using advanced metallurgical, polymer, and materials research, mathematical modeling, and computerized statistical analysis.

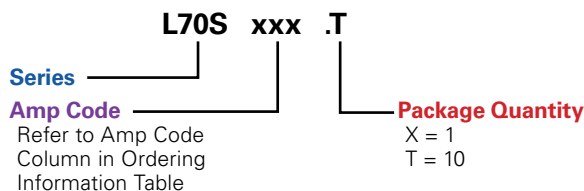
## Features/Benefits

- Extremely Current Limiting
- Low Watt Losses
- Controlled Transient Over-voltages
- UL Recognized

## Applications

- AC & DC Drives
- DC Common Bus Protection
- Power Converters
- UPS
- Soft-Starters

## Part Numbering System



SERIES	AMP	CATALOG NUMBER	ORDERING NUMBER
L70S	10	L70S010	L70S010.T
L70S	500	L70S500	L70S500.X

## Recommended Fuse Block

LSCR001 (35–100 A)  
LSCR002 (125–800 A)

## Web Resources

Download technical documents: [littelfuse.com/L70S](http://littelfuse.com/L70S)

# L70S SERIES HIGH-SPEED FUSE

## Electrical Specifications

CATALOG NUMBER	AMPERE RATING	VOLTAGE RATING		INTERRUPT RATING		MELTING (PRE-ARC) I²T (A²s)	TOTAL CLEARING I²T (A²s)	TOTAL CLEARING I²T (A²s)	TOTAL CLEARING I²T (A²s)	WATTS LOSS AT 100% RATED CURRENT	WATTS LOSS AT 80% RATED CURRENT
		AC	DC	AC	DC		100 kA @ 700 Vac	200 kA @ 700 Vac	20 kA @ 650 Vdc	(W)	(W)
L70S010	10	700	650	200kA	20kA	21	160	173	346	2	1
L70S015	15	700	650	200kA	20kA	34	330	355	270	2	2
L70S020	20	700	650	200kA	20kA	48	550	599	300	5	2
L70S025	25	700	650	200kA	20kA	62	810	900	340	7	4
L70S030	30	700	650	200kA	20kA	77	1,130	1,220	417	10	5
L70S035	35	700	650	200kA	20kA	110	1,470	1,500	500	12	6
L70S040	40	700	650	200kA	20kA	150	1,830	2,000	660	13	7
L70S050	50	700	650	200kA	20kA	250	2,670	3,200	1,070	16	9
L70S060	60	700	650	200kA	20kA	380	3,646	4,674	1,572	18	9
L70S070	70	700	650	200kA	20kA	545	4,800	6,000	1,970	16	9
L70S080	80	700	650	200kA	20kA	745	6,180	7,550	2,380	21	11
L70S090	90	700	650	200kA	20kA	990	7,650	9,250	2,830	25	13
L70S100	100	700	650	200kA	20kA	1,266	9,407	11,117	3,266	29	14
L70S125	125	700	650	200kA	20kA	2,150	14,700	17,550	4,900	33	17
L70S150	150	700	650	200kA	20kA	3,280	21,250	25,700	6,800	51	24
L70S175	175	700	650	200kA	20kA	4,700	28,750	34,800	9,000	63	28
L70S200	200	700	650	200kA	20kA	6,411	37,300	45,583	11,447	75	33
L70S225	225	700	650	200kA	20kA	8,000	46,500	57,000	16,000	43	24
L70S250	250	700	650	200kA	20kA	9,900	58,000	69,500	22,000	49	27
L70S300	300	700	650	200kA	20kA	14,000	83,000	97,700	37,500	60	33
L70S350	350	700	650	200kA	20kA	19,000	113,000	131,000	59,000	71	36
L70S400	400	700	650	200kA	20kA	24,373	147,290	169,000	87,875	107	49
L70S450	450	700	650	200kA	20kA	33,000	191,000	219,000	119,000	85	47
L70S500	500	700	650	200kA	20kA	44,200	240,000	275,000	155,000	92	49
L70S600	600	700	650	200kA	20kA	72,000	370,250	405,000	246,182	106	56
L70S700	700	700	650	200kA	20kA	110,000	526,000	573,000	255,000	128	67
L70S800	800	700	650	200kA	20kA	157,082	735,330	762,333	262,949	156	78

## Dimensions

AMPERE RATING	FIGURE NO.	DIMENSIONS INCHES (MM)								
		A	B	C	D	E	F	G	H	J
10 – 30	1	2 (50.8)	—	½ (12.7)	⅜ (14.3)	—	—	—	—	—
31 – 60	2	2⅞ (73.0)	3⅞ (87.3)	3¾ (95.2)	4⅜ (111.1)	1 (25.4)	4⅜ (111.1)	1⅜ (8.7)	⅛ (3.2)	—
61 – 100	2	2⅞ (73.0)	3⅞ (90.5)	3⅞ (93.7)	4⅜ (111.1)	1⅜ (31.0)	2⅞ (22.9)	⅝ (7.9)	⅜ (4.8)	—
101 – 200	2	2⅞ (72.2)	3⅞ (89.7)	4⅜ (105.6)	5⅜ (129.4)	1½ (38.1)	1 (25.4)	1⅜ (10.3)	¼ (6.4)	—
201 – 400	2	2⅞ (72.2)	3⅞ (89.7)	4⅜ (105.6)	5⅜ (129.4)	2 (50.8)	1½ (38.1)	1⅜ (10.3)	¼ (6.4)	—
401 – 600	2	2⅞ (72.2)	4⅞ (124.6)	5¼ (133.4)	7⅜ (180.2)	2½ (63.5)	2 (50.8)	1⅜ (13.5)	⅜ (9.5)	—
601 – 800	3	3⅞ (84.1)	5⅞ (134.9)	6⅜ (173.0)	—	2⅞ (73.0)	2 (50.8)	⅝ (15.9)	⅜ (9.5)	⅝ (7.9)

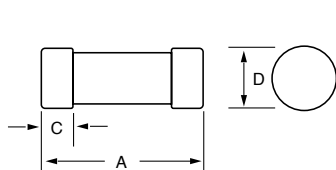


Figure 1

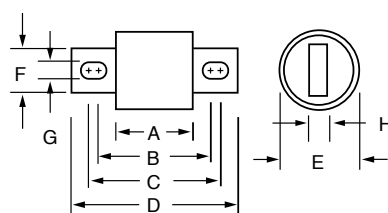


Figure 2

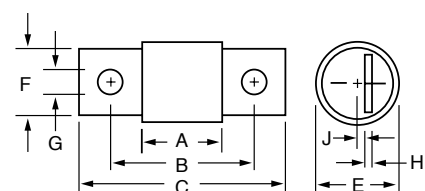


Figure 3

## TRADITIONAL HIGH-SPEED FUSES

150/250/600 Vac • Very Fast-Acting • 1-1200 A



## Specifications

## Voltage Ratings

**L15S:**

150 Vac/dc (1 – 60 A)

150 Vac (70 – 1000 A)

100 V<sub>dc</sub> (70 – 1000 A)

**L25S:**

250 Vac/dc (1 – 200 A)

250 Vac (225 – 800 A)

200 V<sub>dc</sub> (225 – 800 A)

L25S series fuses are Littelfuse Certified for DC ratings shown in Rating Table.

**L60S:**

600 Vac

**KLC:**

600 Vac

## Interrupting Rating

**AC:**

200 kA rms (L15S series 100 kA)

**DC:**

20 kA

### Ampere Range

1 – 1200 A See Rating Table for ratings available in each series.

## Approvals

UL Recognized (File: E71611)  
CSA Recognized (File: LR29862)

## Part Numbering System

XXXX XXX .T

## Series

### Amp Code

Refer to Amp Code  
Column in Ordering  
Information Table

### Package Quantity

X = 1 (125-800 A) L60S & KLC only

T = 10 (1-450 A) L15S  
(1-60 A) excluding L15S

V = 5 (500-1000A) L15S  
(70-100 A) excluding L15S

## Recommended Fuse Holders

1LFS101/1LFS102

LSCR001/LSCR002

## Web Resources

For additional information, visit: **[littelfuse.com/high-speed](http://littelfuse.com/high-speed)**

## Ordering Information

AMPERE RATINGS	SERIES ORDERING NUMBER			
	L15S	L25S	L60S	KLC†
1	L15S001	L25S001	L60S001	KLC001
2	L15S002	L25S002	L60S002	KLC002
3	L15S003	L25S003	L60S003	KLC003
4	L15S004	L25S004	L60S004	KLC004
5	L15S005	L25S005	L60S005	KLC005
6	L15S006	L25S006	L60S006	KLC006
7	L15S007	—	—	KLC007
8	L15S008	L25S008	L60S008	KLC008
9	L15S009	—	—	—
10	L15S010	L25S010	L60S010	KLC010
12	L15S012	L25S012	L60S012	KLC012
15	L15S015	L25S015	L60S015	KLC015
17½	—	—	L60S17.5	KLC17.5
20	L15S020	L25S020	L60S020	KLC020
25	L15S025	L25S025	L60S025	KLC025
30	L15S030	L25S030	L60S030	KLC030
35	L15S035	L25S035	L60S035	KLC035
40	L15S040	L25S040	L60S040	KLC040
45	L15S045	L25S045	L60S045	KLC045
50	L15S050	L25S050	L60S050	KLC050
60	L15S060	L25S060	L60S060	KLC060
70	L15S070	L25S070	L60S070	KLC070
80	L15S080	L25S080	L60S080	KLC080
90	L15S090	L25S090	L60S090	KLC090
100	L15S100	L25S100	L60S100	KLC100
110	—	—	—	KLC110
125	L15S125	L25S125	L60S125	KLC125
150	L15S150	L25S150	L60S150	KLC150
175	—	L25S175	L60S175	KLC175
200	L15S200	L25S200	L60S200	KLC200
225	—	L25S225	L60S225	KLC225
250	L15S250	L25S250	L60S250	KLC250
275	—	L25S275	—	—
300	L15S300	L25S300	L60S300	KLC300
350	L15S350	L25S350	L60S350	KLC350
400	L15S400	L25S400	L60S400	KLC400
450	L15S450	L25S450	L60S450	KLC450
500	L15S500	L25S500	L60S500	KLC500
550	—	—	—	—
600	L15S600	L25S600	L60S600	KLC600
700	—	L25S700	L60S700	KLC700
800	L15S800	L25S800	L60S800	KLC800
900	—	—	—	—
1000	L15S1000	—	—	—
1200	—	—	—	—

† KLC series fuses are recommended for replacement use only.

# TRADITIONAL HIGH-SPEED FUSES

## Dimensions

AMPERE RATING	FIG. NO.	DIMENSIONS INCHES (MM)							
		A	B	C	D	E	F	G	H
L15S Series, 150 Vac									
1 – 30	1	1½ (38.1)	—	¾ (9.5)	1⅜ (10.3)	—	—	—	—
31 – 60	1	2 (50.8)	—	⅝ (15.9)	1⅜ (20.6)	—	—	—	—
61 – 450	3	1⅝ (29.4)	1⅞ (47.6)	2⅜ (55.6)	2⅜ (67.5)	1 (25.4)	43/64 (17.1)	⅝ (7.9)	⅜ (4.8)
451 – 1000	3	1¼ (31.8)	1⅝ (49.2)	2⅞ (65.1)	3½ (88.9)	1½ (38.1)	1 (25.4)	1⅜ (10.3)	¼ (6.4)
L25S Series, 250 Vac									
1 – 30	1	2 (50.8)	—	½ (12.7)	9/16 (14.3)	—	—	—	—
31 – 60	2	1⅝ (41.3)	2¼ (57.2)	2½ (63.5)	3⅜ (81.0)	1⅜ (20.6)	2⅜ (18.3)	1½ (8.7)	⅞ (3.2)
61 – 200	3	1⅝ (41.3)	2⅝ (58.7)	2⅞ (61.9)	3⅞ (79.4)	1⅜ (31.0)	1 (25.4)	⅝ (7.9)	⅜ (4.8)
201 – 700	3	1⅞ (40.5)	2⅞ (57.9)	2⅞ (73.8)	3⅜ (97.6)	1½ (38.1)	1 (25.4)	1⅜ (10.3)	¼ (6.4)
701 – 800	3	1⅞ (40.5)	2⅞ (57.9)	2⅞ (73.8)	3⅜ (97.6)	2 (50.8)	1½ (38.1)	1⅜ (10.3)	¼ (6.4)
L60S Series, 600 Vac									
1 – 30	1	5 (127.0)	—	⅝ (15.9)	1⅜ (20.6)	—	—	—	—
31 – 60	2	2⅝ (70.6)	3⅞ (87.3)	3⅞ (93.7)	4⅞ (111.1)	1⅜ (20.6)	2⅜ (18.3)	1½ (8.7)	⅞ (3.2)
61 – 100	2	2⅞ (73.8)	3⅞ (89.7)	3⅝ (96.0)	4⅝ (113.5)	1⅞ (27.0)	2⅜ (18.3)	1½ (8.7)	⅞ (3.2)
101 – 200	2	2⅞ (73.8)	3⅞ (90.5)	3¾ (95.3)	4⅞ (111.9)	1⅞ (33.3)	1 (25.4)	⅝ (7.9)	⅜ (4.8)
201 – 400	2	2⅞ (73.8)	3⅞ (100.8)	4⅝ (105.6)	5⅞ (130.2)	1⅜ (40.1)	1 (25.4)	1⅜ (10.3)	¼ (6.4)
401 – 600	2	2⅞ (73.0)	3⅞ (100.8)	4⅞ (105.2)	5⅞ (130.2)	2⅞ (52.8)	1½ (38.1)	1⅜ (10.3)	¼ (6.4)
601 – 800	2	3⅜ (77.0)	5⅝ (133.4)	5⅞ (135.7)	7¼ (184.2)	2½ (63.5)	2 (50.8)	1⅜ (13.5)	⅜ (9.5)
KLC Series, 600 Vac									
1 – 30	2	1⅞ (47.6)	2½ (63.5)	—	2⅞ (73.0)	9/16 (14.3)	1⅜ (10.3)	¼ (6.4)	⅜ (1.2)
31 – 60	2	2¾ (69.9)	3⅞ (85.7)	3⅞ (92.1)	4⅝ (109.5)	1⅜ (20.6)	2⅜ (18.3)	1½ (8.7)	⅞ (3.2)
61 – 100	3	2⅞ (73.0)	3⅞ (92.9)	4⅞ (103.2)	5 (127.0)	1 (25.4)	¾ (19.1)	1⅜ (10.3)	⅞ (3.2)
101 – 200	3	2⅞ (72.2)	3⅞ (89.7)	4⅞ (111.1)	5⅝ (129.4)	1½ (38.1)	1 (25.4)	1⅜ (10.3)	¼ (6.4)
201 – 400	3	2⅞ (72.2)	4⅞ (118.3)	4⅞ (123.0)	6¼ (158.8)	2 (50.8)	1⅞ (41.3)	9/16 (14.3)	¼ (6.4)
401 – 800	3	2⅞ (72.2)	4⅞ (118.3)	5⅞ (135.7)	6¼ (158.8)	2½ (63.5)	2 (50.8)	9/16 (14.3)	⅜ (9.5)

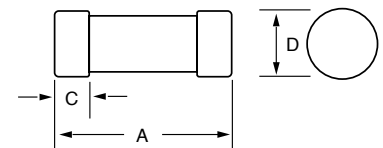


Fig. 1

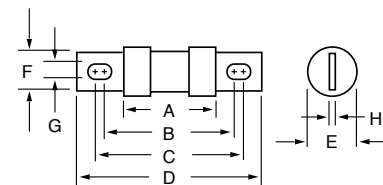


Fig. 2

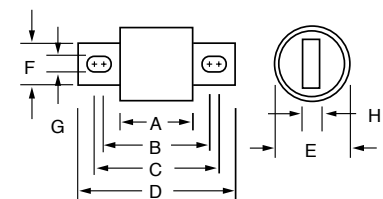


Fig. 3

# LSCR SERIES HIGH-SPEED FUSE BLOCKS

700 Vac/dc • 1-800A



## Description

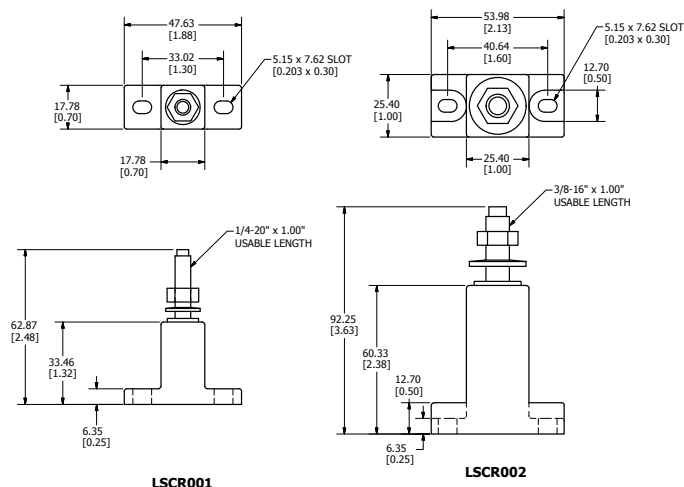
The LSCR Series are modular fuse blocks designed to accommodate a wide range of High-Speed and Class T fuses.

## Features/Benefits

- Modular design reduces inventory requirements
- Sold in pairs for convenience
- Constructed of molded phenolic (with plated steel studs)

## Dimensions

Millimeters [inches]



## Specifications

<b>Voltage Rating</b>	LSCR001: 700 V LSCR002: 700 V
<b>Ampere Ratings</b>	LSCR001: 1 – 400 A capacity LSCR002: 70 – 800 A capacity
<b>Approvals</b>	UL Recognized (File: E14721), CSA Certified (File: 73160)
<b>Stud Size</b>	LSCR001: ¼ -20 thread (Torque 61 in-lbs) LSCR002: ⅜ -16 thread (Torque 192 in-lbs)
<b>Material</b>	Base: Molded phenolic. 150° C temperature rating Terminal Construction: Plated steel. Supplied with nut and Belleville washer
<b>Environmental</b>	RoHS Compliant
<b>Country of Origin</b>	China

## Recommended Fuses

High-Speed and Class T fuses. See tables below.

### LSCR001 High-Speed Fuse Block Selection Guide

FUSE SERIES	AMPERE RATINGS
L15S	70-400
L17T	70-250
L25S	35-200
L50S	35-200
L60S	35-200
L70S	35-100
KLC	35-60
JLLN	70-200
JLLS	70-200
L50QS	35-200
L70QS	35-100

### LSCR002 High-Speed Fuse Block Selection Guide

FUSE SERIES	AMPERE RATINGS
L15S	500-800
L17T	300-800
L25S	225-800
L50S	225-800
L60S	225-800
L70S	125-800
KLC	70-800
JLLN	225-800
JLLS	225-800
L50QS	225-800
L70QS	125-800

## Web Resources

For more information, visit: [littelfuse.com/lscr](http://littelfuse.com/lscr)



## SECTION OVERVIEW

High-speed fuses are often best suited for power conversion and conditioning applications such as drives, inverters, UPS and rectifiers. However, based on the design of individual systems, standard UL Class fuses like Class T, Class J, Class L, Class CC and Supplementary Midget fuses will often provide enough protection to strike the optimal balance between performance, efficiency and cost. Littelfuse also offers a broad line of fuses and holders that are designed to meet solar DC standards, as well as telecom protection products.

For additional application support, cross reference or product details please visit our website or call 1-800-TEC-FUSE to find out more about these products.

## FAST-ACTING PRODUCTS

### UL Class L

LDC Series POWR-PRO® Fuses ..... 18

### UL Class J

JLS Series Fuses ..... 19

LF Series Fuse Blocks ..... 20

### UL Class T

JLLN / JLLS Series Fuses ..... 21

LF Series Fuse Blocks ..... 22

### UL Class CC / Midget

KLKR / KLKD Series Fuses ..... 23

LPSC / LPSM POWR-SAFE Fuse Holders ..... 24

### Telecommunications

L17T Series Telcom Power Fuses ..... 25

TLS Series Telcom Power Fuses ..... 25

### Solar Rated Products

#### 1000 V Rated

SPF Series Solar Fuses ..... 26

SPFI Series In-Line Solar Fuses ..... 26

LPHV POWR-SAFE Fuse Holders ..... 27

SPFJ Series Solar Fuses ..... 28

LFJ1000 Series Solar Fuse Block ..... 29

#### 1500 V Rated

SPXV Series Solar Fuse ..... 29

SPXI Series In-Line Solar Fuse ..... 30

LPXV TOUCH-SAFE Fuse Holders ..... 31

## LDC SERIES POWR-PRO® FUSES

600 Vac/dc • Fast Acting • 150-2000 A



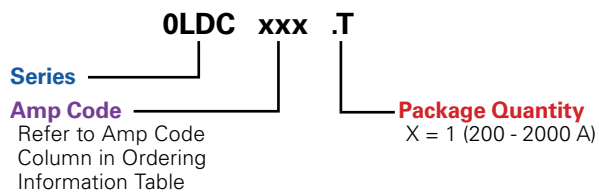
**POWR-PRO®**



### Specifications

<b>Voltage Ratings</b>	600 Vac/dc or less
<b>Ampere Range</b>	150–2000 A
<b>Interrupting Ratings</b>	AC: 200 kA rms symmetrical DC: 50 kA
<b>Time Constant</b>	16 ms
<b>Approvals</b>	Standard 248-10, Class L UL Listed 601–2000 A (File: E81895) UL Recognized 150–600 A (File: E71611) CSA Certified (File: LR29862)
<b>Material</b>	Melamine body, Copper caps (silver plated)
<b>Country of Origin</b>	Mexico

### Part Numbering System



### Ordering Information

AMPERE RATINGS				
150	450	750	1201	1601
200	500	800	1300	1800
250	600	900	1350	1900
300	601	1000	1400	2000
350	650	1100	1500	
400	700	1200	1600	

SERIES	AMPERAGE	CATALOG NUMBER	ORDERING NUMBER
LDC	700	LDC700	0LDC700.X

### Web Resources

Download TC curves, CAD drawings and other technical documents: [littelfuse.com/ldc](http://littelfuse.com/ldc)

# JLS SERIES FUSES

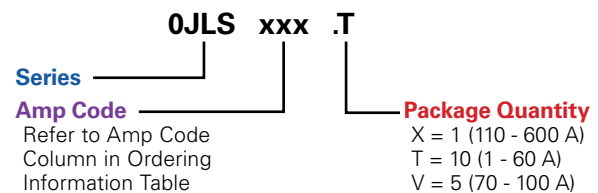
600 Vac • Fast-Acting • 1-600 A




## Specifications

<b>Voltage Ratings</b>	600 Vac or less
<b>Ampere Range</b>	1–600 A
<b>Interrupting Ratings</b>	200 kA rms symmetrical
<b>Approvals</b>	Standard 248-8, Class J UL Listed (File: E81895) CSA Certified (File: LR29862) Federal Specification WF-1814 (QPL-W-F-1814)
<b>Material</b>	1-60 A: Melamine body, Bronze cap (nickel plated) 70-400 A: Melamine body, Brass cap 450-600 A: Melamine body, Copper cap
<b>Country of Origin</b>	Mexico

## Part Numbering System



## Ordering Information

AMPERE RATINGS					
1	20	45	90	175	350
3	25	50	100	200	400
6	30	60	110	225	450
10	35	70	125	250	500
15	40	80	150	300	600

VOLTAGE	SERIES	AMP	CATALOG NUMBER	ORDERING NUMBER
600	JLS	110	JLS110	0JLS110.X

## Recommended Fuse Holders

LFJ60 Series  
LFPSJ Series (8/10–60 A)

## Web Resources

Download TC curves, CAD drawings and other technical information: [littelfuse.com/jls](http://littelfuse.com/jls)

# LF SERIES CLASS J FUSE BLOCKS

600 V



## Specifications

<b>Voltage Ratings</b>	600 V
<b>Ampere Ratings</b>	0 – 600 A
<b>Leakage Current</b>	<0.6 mA at 600 V
<b>Flammability Rating</b>	UL94 V-0
<b>Approvals</b>	UL Listed (File: E14721) CSA Certified (File: LR7316)
<b>Environmental</b>	RoHS Compliant, Lead (Pb) Free

## Recommended Fuses

**Time Delay**  
Series: JTD\_ID  
Series: JTD

**Fast Acting**  
Series: JLS

For information about Touch-Safe Class J fuse holders:  
[Littelfuse.com/lfpsj](http://Littelfuse.com/lfpsj)

## Web Resources

Sample requests, downloadable CAD drawings, fuse block cover datasheet and other technical information:  
[Littelfuse.com/fuseblocks](http://Littelfuse.com/fuseblocks)  
[Littelfuse.com/lfj](http://Littelfuse.com/lfj)

## Ordering Information (Class J 600 V)

AMP RATING	POLES	ORDERING NUMBER				TORQUE	TERMINAL	WIRE RANGE	WIRE TYPE		BASE TEMP RATING	DIN RAIL	INDICATION	COVER ORDERING NUMBER*
		BASE PART NUMBER	TERMINAL SUFFIX											
			BOX LUG	PRESSURE PLATE	SCREW									
30	1	LFJ600301	CID	PID	SID	2.8 N-m (25 in-lbs)	C	6-14 AWG	CU Only	Solid / Stranded	125°C	●	●	LFJ60030FBC
	2	LFJ600302	CID	PID	SID		P	10-14 AWG						
	3	LFJ600303	CID	PID	SID		S	10-22 AWG						
60	1	LFJ600601	CID	—	—	5.6 N-m (50 in-lbs)	2-4 AWG		CU-AL		125°C	●	●	LFJ60060FBC
	2	LFJ600602	CID	—	—	2.8 N-m (25 in-lbs)	6-14 AWG							
	3	LFJ600603	CID	—	—									
100	1	LFJ601001	CID	—	—	13.6 N-m (120 in-lbs)	2/0-6 AWG		CU-AL		130°C	—	●	LFJ60100FBC
	3	LFJ601003	CID	—	—	4.5 N-m (40 in-lbs)	8 AWG							
						4.0 N-m (35 in-lbs)	10-14 AWG							
200	1	LFJ602001	C	—	—	31.1 N-m (275 in-lbs)	250 kcmil-6		CU-AL		130°C	—	—	—
	3	LFJ602003	C	—	—									
400	1	LFJ604001	C	—	—	31.1 N-m (275 in-lbs)	(2) 350 kcmil-1/0		CU-AL		130°C	—	—	—
	3	LFJ604003	C	—	—									
600	1	LFJ606001	C	—	—	42.4 N-m (375 in-lbs)	(2) 500 kcmil-4		CU-AL		130°C	—	—	—
	3	LFJ606003	C	—	—									

Note: Reinforcing springs standard on all Class J fuse blocks.

\*Covers sold individually. One cover needed for each pole.

## JLLN / JLLS SERIES FUSES

300/600 Vac • Fast-Acting • 1-1200 A



## Specifications

## Voltage Ratings

AC: 300 V (JLLN)  
 600 V (JLLS)  
 DC: 125 V (JLLN 70 – 1200 A)  
 160 V (JLLN 1 – 60 A)  
 300 V (JLLS)

## Interrupting Ratings

AC: 200 kA rms symmetrical  
 DC: 20 kA (JLLN 35-1200 A only)

## Ampere Range

1 – 1200 A

## Approvals

AC: Standard 248-15, Class T  
 UL Listed (File: E81895):  
 JLLN (1 – 1200 A)  
 JLLS (1 – 1200 A)  
 CSA Certified (File: LR29862)  
 JLLN/JLLS (1 – 600 A)  
 DC: UL Listed (File: E81895):  
 JLLN (35 – 1200 A)  
 Littelfuse self-certified  
 JLLN (1 – 30 A)  
 JLLS (1 – 1200 A)

## Material

JLLN: 1-30 A: Melamine body, Bronze caps  
 35-1200 A: Melamine body, Copper caps  
 JLLS: 1-30 A: Melamine body, Copper caps  
 35-60 A: Melamine body, Bronze caps  
 70-1200 A: Melamine body, Copper caps

## Environmental

RoHS Compliant

## Ordering Information

AMPERE RATINGS					
1	25	70	175	450	1100
2	30	80	200	500	1200
3	35	90	225	600	
6	40	100	250	700	
10	45	110	300	800	
15	50	125	350	900*	
20	60	150	400	1000	

\*JLLS only

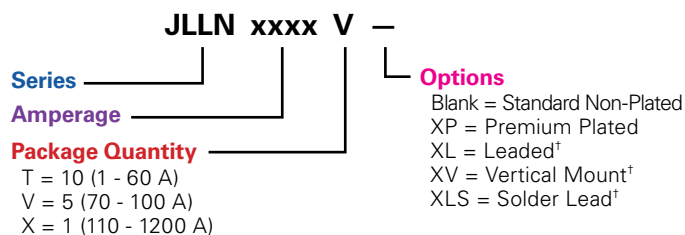
## Recommended Fuse Holders

LFT30 Series  
 LFT60 Series  
 LSCR Series for 70-800 A

## Web Resources

Download TC Curves, CAD drawings and other technical information: [littelfuse.com/jlln](http://littelfuse.com/jlln)  
[littelfuse.com/jlls](http://littelfuse.com/jlls)

## Part Numbering System



SERIES	AMP	PACK SIZE	PLATING SUFFIX	MOUNT SUFFIX	CATALOG NUMBER	ORDERING NUMBER
JLLS	6	T	–	–	JLLS006	JLLS006.T
JLLN	35	V	–	XL†	JLLN035L	JLLN035.VXL
JLLN	100	V	XP	–	JLLN100P	JLLN100.VXP

†Option is available for JLLN 35-60 A only. Premium plating is standard

# LF SERIES CLASS T FUSE BLOCKS

300 V • 600 V



## Specifications

<b>Voltage Ratings</b>	300 VAC/600 VAC
<b>Ampere Ratings</b>	0 – 600 A
<b>Leakage Current</b>	<0.6 mA at 600 V
<b>Withstand Rating</b>	200 kA RMS SYM
<b>Flammability Rating</b>	UL94 V-0
<b>Approvals</b>	UL Listed (File: E14721) CSA Certified (File: LR7316)
<b>Environmental</b>	RoHS Compliant, Lead (Pb) Free

## Recommended Fuses

300V JLLN  
600V JLLS

## Web Resources

Sample requests, downloadable CAD drawings and other technical information: [Littelfuse.com/lft](http://Littelfuse.com/lft)  
[Littelfuse.com/fuseblocks](http://Littelfuse.com/fuseblocks)

## Ordering Information (Class T 300 V)

AMP RATING	ORDERING NUMBER							TORQUE	WIRE RANGE	WIRE TYPE		BASE TEMP RATING	DIN RAIL MOUNT	COVER ORDERING NUMBER*
	BASE ORDERING NUMBER	POLES			TERMINAL SUFFIX									
		1	2	3	BOX LUG	PRESSURE PLATE	SCREW							
30	LFT30030	1	2	3	C	—	—	5.6 N-m (50 in-lbs) 2.8 N-m (25 in-lbs)	2-4 AWG 6-14 AWG	CU-AL Solid/Stranded	125°C	•	LFT30030FBC	
60	LFT30060	1	2	3	C	—	—	5.6 N-m (50 in-lbs) 2.8 N-m (25 in-lbs)	2-4 AWG 6-14 AWG		125°C	•	LFT30060FBC	
100	LFT30100	1	—	3	CS	—	—	13.6 N-m (120 in-lbs) 4.5 N-m (40 in-lbs)	2/0-6 AWG 8 AWG		130°C	—	LFT30100FBC	
200	LFT30200	1	—	3	CS	—	—	4.0 N-m (35 in-lbs) 31.1 N-m (275 in-lbs)	10-14 AWG 250 kcmil-6		130°C	—	—	
400	LFT30400	1	—	3	CS	—	—	(2) 31.1 N-m (275 in-lbs)	250 kcmil-6		130°C	—	—	
600	LFT30600	1	—	3	CS	—	—	(2) 42.4 N-m (375 in-lbs)	500 kcmil-6		130°C	—	—	

## Ordering Information (Class T 600 V)

AMP RATING	ORDERING NUMBER							TORQUE	WIRE RANGE	WIRE TYPE		BASE TEMP RATING	DIN RAIL MOUNT	COVER ORDERING NUMBER*
	BASE ORDERING NUMBER	POLES			TERMINAL SUFFIX									
		1	2	3	BOX LUG	PRESSURE PLATE	SCREW							
30	LFT60030	1	2	3	C	P	S	5.6 N-m (50 in-lbs) 2.8 N-m (25 in-lbs)	2-4 AWG 6-14 AWG	† SEE NOTE	CU-AL Solid/Stranded	125°C	•	LFT60030FBC
60	LFT60060	1	2	3	C	—	—	5.6 N-m (50 in-lbs) 2.8 N-m (25 in-lbs)	2-4 AWG 6-14 AWG			125°C	•	LFT60060FBC
100	LFT60100	1	—	3	CS	—	—	13.6 N-m (120 in-lbs) 4.5 N-m (40 in-lbs) 4.0 N-m (35 in-lbs)	2/0-6 AWG 8 AWG 10-14 AWG			130°C	—	LT60100FBC
200	LFT60200	1	—	3	CS	—	—	31.1 N-m (275 in-lbs)	250 kcmil-6			130°C	—	LT60200FBC
400	LFT60400	1	—	3	CS	—	—	(2) 31.1 N-m (275 in-lbs)	250 kcmill-6			130°C	—	LT60400FBC
600	LFT60600	1	—	3	CS	—	—	(2) 42.4 N-m (375 in-lbs)	500 kcmil-6			130°C	—	LT60600FBC

\* Covers sold individually. One cover needed for each pole.

† Wire Type for Pressure Plate and Screw Terminal is CU only

# KLKR / KLKD SERIES FUSES

## KLKR Series

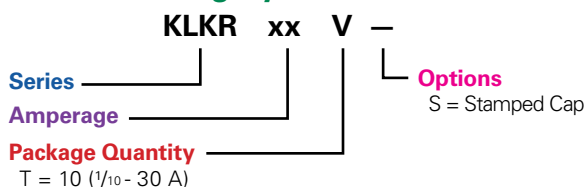
600 Vac/300 Vdc  
Fast-Acting  
1/10-30 A



### Specifications

<b>Voltage Rating</b>	AC: 600 Vac or less DC: 300 Vdc
<b>Ampere Range</b>	1/10 – 30 A
<b>Interrupting Rating</b>	AC: 200 kA rms symmetrical DC: 20 kA
<b>Approvals</b>	AC: Standard 248-4, Class CC UL Listed 1/10 – 30 A (File: E81895) CSA Certified 1/10 – 30 A (File: LR29862) DC: Littelfuse self-certified
<b>Material</b>	Melamine body, Bronze caps (nickel plated)
<b>Environmental</b>	RoHS Compliant
<b>Country of Origin</b>	Mexico

### Part Numbering System



### Recommended Fuse Holders

L60030C Series  
LPSM Touch-Safe Series

### Web Resources

For additional information, visit: [Littelfuse.com/klkr](http://Littelfuse.com/klkr)

### Ordering Information

AMPERE RATINGS				
1/10	1/2	2 1/2	6	12
1/8	3/4	3	7	15
2/10	1	3 1/2	8	20
1/4	1 1/2	4	9	25
3/10	2	5	10	30

SERIES	AMP	CATALOG NUMBER	ORDERING NUMBER
KLKR	12	KLKR012	KLKR012.T

## KLKD Series

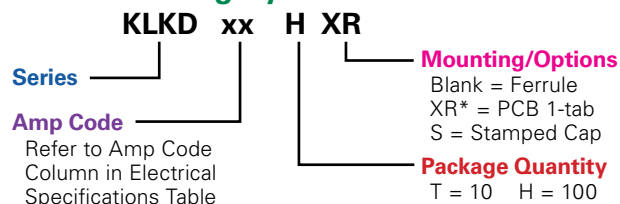
Midget  
600 Vac/dc  
Fast Acting  
1/10-30 A



### Specifications

<b>Voltage Rating</b>	600 Vac/Vdc
<b>Amperage Rating</b>	1/10, 1/8, 2/10, 1/4, 3/10, 1/2, 3/4, 1, 1 1/2, 2, 2 1/2, 3, 3 1/2, 4, 5, 6, 7, 8, 9, 10, 12, 15, 20, 25, 30
<b>Interrupting Ratings</b>	AC: 100 kA 200 kA Littelfuse self-certified DC: 1/10-30: 10 kA (UL 2579) 1/10-30: 50 kA (UL 248-14)
<b>Material</b>	Body: Melamine / Caps: Copper Alloy
<b>Approvals</b>	UL 2579 Listed (File: E339112) IEC 60269-6 (2-25 A) VDE Certified (No. 40033094) UL 248-14 Listed (File: E10480) CSA Certified Ferrule only (File: LR29862)
<b>Environmental</b>	RoHS Compliant
<b>Country of Origin:</b>	Mexico

### Part Numbering System



### Recommended Fuse Holders

Littelfuse LPSM and LPSM Dead-Front Series  
Littelfuse L60030M Open-Face Series

### Web Resources

For additional information, visit: [Littelfuse.com/klkd](http://Littelfuse.com/klkd)

### Ordering Information

AMPERE RATINGS							
FERRULE					PCB 1-TAB		
1/10	1/2	2 1/2	6	12	1/10	4	12
1/8	3/4	3	7	15	1/2	5	15
2/10	1	3 1/2	8	20	1	6	20
1/4	1 1/2	4	9	25	2	8	25
3/10	2	5	10	30	3	10	30

SERIES	AMP	PACKAGE QUANTITY	MOUNTING METHOD	CATALOG NUMBER	ORDERING NUMBER
KLKD	1/8	10	FERRULE	KLKD 1/8	KLKD.125T
KLKD	5	100	FERRULE	KLKD 5	KLKD005.H
KLKD	15	100	PCB 1-TAB	KLKD 15-R	KLKD015.HXR

\*Only available in 100 packs (H) and select ratings.

# LPSC / LPSM POWR-SAFE FUSE HOLDERS

600 V



## Specifications

<b>Voltage Rating</b>	600 Vac/dc
<b>Ampere Rating</b>	30 A
<b>Interrupting Rating</b>	200 kA (Class CC) 100 kA (Midget)
<b>Terminal Type</b>	Pressure plate
<b>Suggested Torque</b>	17.7 in-lbs
<b>Wire Range</b>	#8–#14 CU
<b>Material</b>	Thermoplastic
<b>Flammability Rating</b>	UL94 V-0
<b>Approvals</b>	UL Listed (LPSC File: E14721) UL Recognized (LPSM File: E14721) CSA Certified (LPSC/LPSM File: LR7316)
<b>Environmental</b>	RoHS compliant, Lead (Pb) Free

## Recommended Fuses

Class CC  
Midget-Style (10 x 38 mm)

## Web Resources

Download CAD drawings and other technical information:  
[littelfuse.com/lpsc](http://littelfuse.com/lpsc)  
[littelfuse.com/lpsm](http://littelfuse.com/lpsm)

## Ordering Information

INDICATING		NON-INDICATING		FUSE TYPE	POLES
CATALOG NUMBER	ORDERING NUMBER	CATALOG NUMBER	ORDERING NUMBER		
LPSC001ID	LPSC0001ZXID	LPSC001	LPSC0001Z	Class CC	1
LPSC002ID	LPSC0002ZXID	LPSC002	LPSC0002Z	Class CC	2
LPSC003ID	LPSC0003ZXID	LPSC003	LPSC0003Z	Class CC	3
LPSC004ID	LPSC0004ZXID	LPSC004	LPSC0004Z	Class CC	4
LPSM001ID	LPSM0001ZXID	LPSM001	LPSM0001Z	Midget	1
LPSM002ID	LPSM0002ZXID	LPSM002	LPSM0002Z	Midget	2
LPSM003ID	LPSM0003ZXID	LPSM003	LPSM0003Z	Midget	3
LPSM004ID	LPSM0004ZXID	LPSM004	LPSM0004Z	Midget	4

**Multi-Pole Assembly Kit**    Ordering No. CYHP0001Z-KIT  
(Kit contains 20 connector pincers & 10 handle pins.)

# L17T / TLS SERIES TELCOM POWER FUSE

## L17T Series

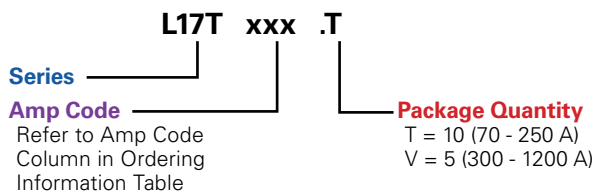
170 Vdc  
Current-Limiting  
70-1200 A



## Specifications

<b>Voltage Rating</b>	170 VDC
<b>Interrupting Rating</b>	100 kA
<b>Ampere Range</b>	70 – 1200 A
<b>Approvals</b>	UL Recognized (File: E71611) CSA Recognized (File: LR29862)

## Part Numbering System



## Recommended Fuse Holders

LTFD 6001 and LTFD 1200 series, visit: [Littelfuse.com/ltfld](http://Littelfuse.com/ltfld)

## Web Resources

For additional information, visit: [Littelfuse.com/l17t](http://Littelfuse.com/l17t)

## Ordering Information

AMPERE RATINGS						
70	125	200	300	450	800	1100
90	150	225	350	500	900	1200
100	175	250	400	600	1000	—

SERIES	VOLTAGE	AMPERAGE	CATALOG NUMBER	ORDERING NUMBER
L17T	170	1200	L17T 1200	L17T1200V

## TLS Series

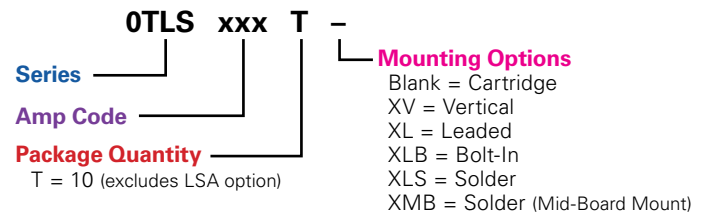
170 Vdc  
Current-Limiting  
1-125 A



## Specifications

<b>Voltage Rating</b>	170 Vdc
<b>Ampere Range</b>	1 – 125 A
<b>Interrupting Rating</b>	100 kA
<b>Approvals</b>	UL Recognized (File: E71611)
<b>Construction</b>	Body: Glass melamine Caps: Silver-plated brass
<b>Environmental</b>	RoHS Compliant, Lead (Pb) Free

## Part Numbering System



## Recommended Fuse Holders

LFT30060 for TLS series cartridge style fuse

## Web Resources

For additional information, visit: [Littelfuse.com/tls](http://Littelfuse.com/tls)

## Ordering Information

AMPERE RATINGS				
1	6	25	50	90
2	10	30	60	100
3	15	35	70	110*
5	20	40	80	125*

\*Available in standard cartridge only.

SERIES	AMP	MOUNTING METHOD	MOUNTING SUFFIX	CATALOG NUMBER	ORDERING NUMBER
TLS	6	Cartridge	—	TLS006	0TLS006.T
TLS	15	Vertical	V	TLS015V	0TLS015.TXV
TLS	35	Leaded	L	TLS035L	0TLS035.TXL
TLS	50	Bolt-In	LB	TLS050LB	0TLS050.TXLB
TLS	80	Solder	LS	TLS080LS	0TLS080.TXLS
TLS	100	Solder	MB	TLS100MB	0TLS100.TXMB

## SPF SERIES SOLAR FUSES

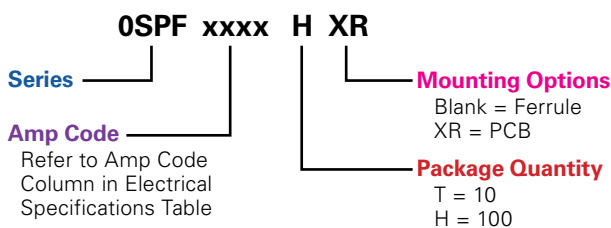
1000 Vdc  
1-30 A



### Specifications

<b>Voltage Rating</b>	1000 VDC
<b>Amperage Rating</b>	1, 2, 3, 3.5, 4, 5, 6, 8, 10, 12, 15, 20, 25, 30
<b>Max. Interrupting Rating</b>	20 kA
<b>Time Constant</b>	≤ 2ms
<b>Material</b>	Body: Melamine; Caps: Copper Alloy
<b>Approvals</b>	UL 2579 Listed (File: E339112) IEC 60269-6 (1-25 A) VDE Certified (No. 40033098) CSA Certified (File: 029862_0_000)
<b>Environmental</b>	RoHS Compliant
<b>Country of Origin</b>	Mexico

### Part Numbering System



SERIES	AMP	PACKAGE QUANTITY	MOUNTING METHOD	CATALOG NUMBER	ORDERING NUMBER
SPF	2	10	Ferrule	SPF002	0SPF002.T
SPF	3.5	10	Ferrule	SPF03.5	0SPF03.5T
SPF	30	100	PCB Tabs	SPF030R	0SPF030.HXR

### Recommended Fuse Holders

LPHV 1000 Vdc POWR-Safe Series

### Web Resources

Download technical documents: [littelfuse.com/spf](http://littelfuse.com/spf)

## SPFI SERIES IN-LINE SOLAR FUSES

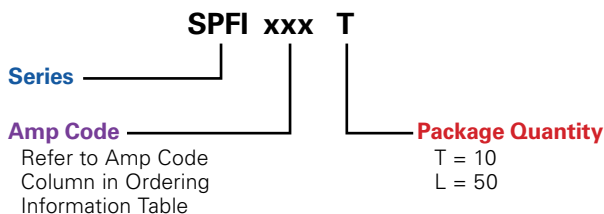
1000 Vdc  
2-30 A  
(Patent Pending)



### Specifications

<b>Voltage Rating</b>	1000 Vdc
<b>Amperage Rating</b>	2, 2.5, 3, 3.5, 4, 5, 6, 8, 10, 12, 15, 20, 25, 30 A
<b>Interrupting Rating</b>	20 kA
<b>Time Constant</b>	≤ 1ms
<b>Material</b>	Body: Melamine Caps: Copper Alloy (Nickel Plated)
<b>Approvals</b>	UL 2579 Recognized (File: E339112)
<b>Environmental</b>	RoHS Compliant, REACH
<b>Country of Origin</b>	Mexico

### Part Numbering System



SERIES	AMP	PACKAGE QUANTITY	CATALOG NUMBER	ORDERING NUMBER
SPFI	2	10	SPFI002	SPFI002.T
SPFI	3.5	10	SPFI03.5	SPFI03.5T
SPFI	20	50	SPFI020	SPFI020.L

### Recommended Crimping Tool

T&B Sta-Kon ERG4002

### Web Resources

Downloadable CAD drawings and other technical information: [littelfuse.com/spfi](http://littelfuse.com/spfi)



Look for this logo to indicate products that are used in solar applications. Visit our website [littelfuse.com/solar](http://littelfuse.com/solar) for the latest updates on approvals, certifications, and new products.

# LPHV POWR-SAFE FUSE HOLDERS

1000 Vdc



## Specifications

<b>Voltage Rating</b>	1000 VDC
<b>Amperage Rating</b>	30 A
<b>SCCR Rating</b>	20 kA
<b>Power Dissipation</b>	4 W Maximum
<b>Fuse Type</b>	10 X 38 mm up to 1000 VDC
<b>Material</b>	Thermoplastic
<b>Flammability Rating</b>	UL94 V-0
<b>Approval</b>	Self-certified 1000 VDC IEC 60269-2, -4, -6
<b>Environmental</b>	RoHS compliant, Lead (Pb) Free

## Recommended Fuses

10x38 mm 1000 VDC Fuses  
 SPF 1000 V Series  
 FLU 1000 V Series

## Multi-Pole Assembly Kit

Kits are used to create multi-pole holders from 1-pole LPHV fuse holders. Please contact factory for more information.

ORDERING NUMBER	DESCRIPTION
CYHP001	20 Connector Pincers & 10 Handle Pins
CYHP002	Connector Pincer only
CYHP003	Handle Pin only

## Web Resources

Sample requests, downloadable CAD drawings and other technical information: [Littelfuse.com/lphv](http://Littelfuse.com/lphv)

More information about solar applications: [Littelfuse.com/solar](http://Littelfuse.com/solar)

## Ordering Information

SERIES	POLES	CATALOG NUMBER	ORDERING NUMBER	TERMINAL TYPE	WIRE TYPE		WIRE RANGE	TERMINAL TORQUE	ROHS
LPHV	1	LPHV001	LPHV0001Z	Pressure Plate	75° C or 90° C CU Only	Stranded / [Solid]	#8-14 AWG (2-10 mm²) / [#10-14 AWG (2-6 mm²)]	17.7 in-lbs (2 N-m)	•
LPHV	2	LPHV002	LPHV0002Z						•
LPHV	3	LPHV003	LPHV0003Z						•
LPHV	4	LPHV004	LPHV0004Z						•



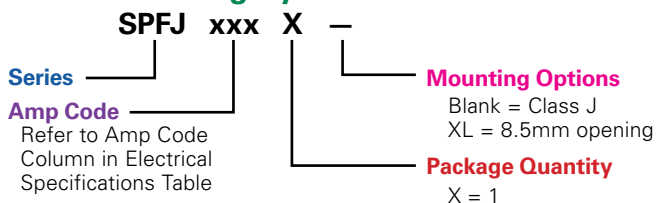
Look for this logo to indicate products that are used in solar applications. Visit our website [Littelfuse.com/solar](http://Littelfuse.com/solar) for the latest updates on approvals, certifications, and new products.

## SPFJ SERIES SOLAR FUSE

1000 Vdc • 70-450 A



### Part Numbering System



SERIES	AMP	PACKAGE QUANTITY	MOUNTING METHOD	CATALOG NUMBER	ORDERING NUMBER
SPFJ	70	1	Class J	SPFJ070	SPFJ070.X
SPFJ	200	1	Large	SPFJ200	SPFJ200.XXL

### Specifications

<b>Voltage Rating</b>	1000 Vdc 600 Vac (125-450 A)
<b>Amperage Rating</b>	70, 80, 90, 100, 125, 160, 200, 250, 300, 350, 400, 450
<b>Interrupting Rating</b>	AC: 200 kAIC (125-450 A) DC: 70-200 A: 20 kAIC 250-400 A: 10 kAIC 450 A: 20 kAIC
<b>Time Constant</b>	≤ 1ms
<b>Material</b>	Body: Melamine End Bells: Copper Alloy
<b>Approvals</b>	UL 2579 Listed (File: E339112) UL 248-8, Class J (125-450 A) cULus (125-450 A) IEC 60269-6 (125-450 A) VDE Certified (125-450 A) (No. 40033659, 40033660, 40033661)
<b>Environmental</b>	RoHS Compliant
<b>Country of Origin</b>	Mexico

### Recommended Fuse Holder

LFJ1000 Solar Series

### Web Resources

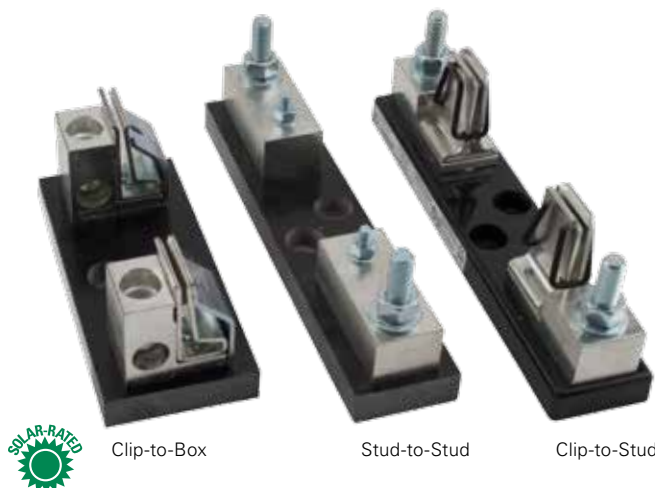
Download technical documents: [Littelfuse.com/spfj](http://Littelfuse.com/spfj)



Look for this logo to indicate products that are used in solar applications. Visit our website [Littelfuse.com/solar](http://Littelfuse.com/solar) for the latest updates on approvals, certifications, and new products.

# LFJ1000 SERIES SOLAR FUSE BLOCK

1000 VDC • Clip-to-Box • Stud-to-Stud • Clip-to-Stud



## Specifications

<b>Voltage Ratings</b>	1000 VDC
<b>Ampere Ratings</b>	200, 400, 450 A
<b>Flammability Rating</b>	UL94 V-0
<b>Termination Type</b>	Box Lug or Stud Mount
<b>Base Temp Rating</b>	130° C
<b>Approvals</b>	UL 4248-18 Listed File: E345481 Vol. 1
<b>Environmental</b>	RoHS Compliant

## Recommended Fuses

SPFJ Solar Series

## Web Resources

 Sample requests, downloadable CAD drawings, dimensions and other technical information: [Littelfuse.com/LFJ1000](http://Littelfuse.com/LFJ1000)

 For a comprehensive overview of solar market solutions, visit: [Littelfuse.com/solar](http://Littelfuse.com/solar)

## Ordering Information (Clip-to-Box Lug 1000 V)

AMPERAGE	ORDERING NUMBER	INTERRUPT RATING	WIRE RANGE STANDARD (METRIC)	WIRE TYPE		RECOMMENDED TORQUE
200	LFJ102001C	20 kA	250 kcmil - #6 (127mm <sup>2</sup> - 16mm <sup>2</sup> )	CU/AL	Solid/ Stranded	275 in-lb (31.1 N-m)
400	LFJ104001C	10 kA	350 kcmil - 1/0 (177mm <sup>2</sup> - 55mm <sup>2</sup> )			275 in-lb (31.1 N-m)
450	LFJ104501C	20 kA	500 kcmil - #4 (253mm <sup>2</sup> - 25mm <sup>2</sup> )			375 in-lb (42.4 N-m)

## (Stud-to-Stud 1000 V)

AMPERAGE	ORDERING NUMBER	INTERRUPT RATING	RECOMMENDED TORQUE		MAX. BUSBAR THICKNESS	RECOMMENDED BASE TORQUE	
			FUSE	TERMINAL		BOLT SIZE	TORQUE
200	LFJ102001STST	20 kA	65 in-lb (7.3 N-m)	200 in-lb (22.6 N-m)	.774" (19.66 mm)	¼" 5/16"	30-40 in-lb 40-50 in-lb
400	LFJ104001STST	10 kA	170 in-lb (19.2 N-m)	200 in-lb (22.6 N-m)	.555" (14.10 mm)		
450	LFJ104501STST	20 kA	300 in-lb (33.9 N-m)	300 in-lb (33.9 N-m)	.570" (14.18 mm)		

## (Clip-to-Stud 1000 V)

AMPERAGE	ORDERING NUMBER	INTERRUPT RATING	RECOMMENDED TORQUE	MAX. BUSBAR THICKNESS	RECOMMENDED BASE TORQUE	
			TERMINAL		BOLT SIZE	TORQUE
200	LFJ102001CST	20 kA	200 in-lb (22.6 N-m)	.774" (19.66 mm)	¼" 5/16"	30-40 in-lb 40-50 in-lb
400	LFJ104001CST	10 kA	200 in-lb (22.6 N-m)	.555" (14.10 mm)		
450	LFJ104501CST	20 kA	300 in-lb (33.9 N-m)	.570" (14.18 mm)		


 Look for this logo to indicate products that are used in solar applications. Visit our website [Littelfuse.com/solar](http://Littelfuse.com/solar) for the latest updates on approvals, certifications, and new products.

## SPXV SERIES SOLAR FUSE

1500 Vdc  
6 - 30 A

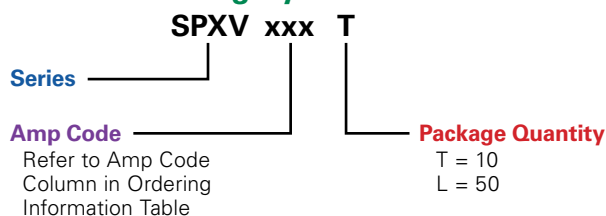
UL CE gPV RoHS



### Specifications

<b>Voltage Rating</b>	1500 Vdc
<b>Amperage Rating</b>	6, 8, 10, 12, 15, 20, 25, 30 A
<b>Interrupting Rating</b>	15 kA (UL 2579) 30 kA (Self-Certified)
<b>Time Constant</b>	≤ 1ms
<b>Material</b>	Body: Melamine Caps: Copper Alloy (Nickel Plated)
<b>Approvals</b>	UL 2579 Listed (File: E339112) RoHS Compliant REACH
<b>Country of Origin</b>	Mexico

### Part Numbering System



SERIES	AMP	PACKAGE QUANTITY	CATALOG NUMBER	ORDERING NUMBER
SPXV	6	10	SPXV006	SPXV006.T
SPXV	20	50	SPXV020	SPXV020.L

### Web Resources

Download technical resources at: [Littelfuse.com/spxv](http://Littelfuse.com/spxv)

## SPXI SERIES IN-LINE SOLAR FUSE

1500 Vdc  
2.5 - 30 A  
(Patent Pending)

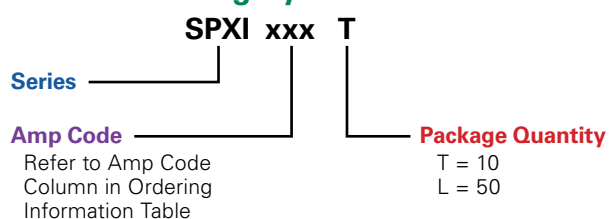
UL CE gPV RoHS



### Specifications

<b>Voltage Rating:</b>	1500 Vdc
<b>Amperage Rating:</b>	2.5, 3.5, 4, 6, 8, 10, 12, 15, 20, 25, 30 A
<b>Interrupting Ratings:</b>	15 kA (UL 2579) 30 kA (Self-Certified)
<b>Time Constant</b>	≤ 1ms
<b>Material:</b>	Body: Melamine Caps: Copper Alloy (Nickel Plated)
<b>Approvals:</b>	UL 2579 Recognized (File: E339112)
<b>Environmental:</b>	RoHS Compliant REACH
<b>Country of Origin:</b>	Mexico

### Part Numbering System



SERIES	AMP	PACKAGE QUANTITY	CATALOG NUMBER	ORDERING NUMBER
SPXI	3.5	10	SPXI03.5	SPXI03.5T
SPXI	4	10	SPXI004	SPXI004.T
SPXI	20	50	SPXI020	SPXI020.L

### Recommended Crimping Tool

T&B Sta-Kon ERG4002

### Web Resources

Download additional technical information and view the complete solar portfolio: [littelfuse.com/spxi](http://littelfuse.com/spxi)



Look for this logo to indicate products that are used in solar applications. Visit our website [Littelfuse.com/solar](http://Littelfuse.com/solar) for the latest updates on approvals, certifications, and new products.

# LPXV TOUCH-SAFE FUSE HOLDERS

1500 V • 30 A



## Specifications

<b>Voltage Ratings</b>	1500 Vdc
<b>Amperage Rating</b>	30 A
<b>SCCR Rating</b>	15 kA
<b>Fuse Type</b>	10x85mm
<b>Material</b>	Thermoplastic
<b>Flammability Rating</b>	UL94 V-0
<b>Temperature Stability</b>	Body: 125° C Carrier: 140° C
<b>Approvals</b>	UL 4248-18 Listed (File: E345481) IEC 60269-1 & IEC 60269-2
<b>Environmental</b>	RoHS compliant, Lead (Pb) free

## Recommended Fuses

Littelfuse SPXV 1500 V Fuses

## Web Resources

Download the complete datasheet and other technical documents: [Littelfuse.com/lpxv](http://Littelfuse.com/lpxv)

## Ordering Information

SERIES	VOLTAGE (VDC)	POLES	CATALOG NUMBER	ORDERING NUMBER	PACK QTY	TERMINAL INFORMATION				
						TERMINAL TYPE	WIRE TYPE	NUMBER OF WIRES	WIRE SIZE	TORQUE
LPXV	1500	1	LPXV001	LPXV0001Z	5	Box Lug	90° Max CU Only Stranded	1	6-4 AWG (16-25 mm <sup>2</sup> )	22-26 lb-in (2.5-3 N-m)
								1	18-8 AWG (.75-10 mm <sup>2</sup> )	18-22 lb-in (2-2.5 N-m)
								2*	18-6 AWG (.75-16 mm <sup>2</sup> )	18-22 lb-in (2-2.5 N-m)

\*Must be the same cross-sectioned size



Look for this logo to indicate products that are used in solar applications. Visit our website [littelfuse.com/solar](http://littelfuse.com/solar) for the latest updates on approvals, certifications, and new products.

## HIGH-SPEED FUSE CROSS REFERENCE



This guide covers the most popular high-speed fuse types that Littelfuse has in stock and ready to ship! The cross reference is meant to serve as a guide for quick identification and product selection. We suggest you check all applicable specifications before making substitutions.

COMPETITOR	LITTELFUSE
A013F	L15S
A015F	L15S
A015R	L15S
A025F	L25S
A050F	L50S
A060F	L60S
A070F	L70S
A13X	L15S
A25X	L25S †
A50P (type 1 & 4)	L50S
A50QS	L50QS
A60X	L60S

COMPETITOR	LITTELFUSE
A70P	L70S
A70QS	L70QS
CHSF	L50QS
FWA	L15S † §
FWH	L50S † §
FWP	L70S * §
FWX	L25S * †
KAA	L15S
KAB	L25S
KAC	KLC
KBH	L50S
RFA	L15S

COMPETITOR	LITTELFUSE
RFC	KLC
RFL (750V)	L70S (700 V)
RFV	L50S
SF13X	L15S
SF25X	L25S
SF50P	L50S
SF60X	L60S
SF70P	L70S
XL25X	L25S
XL50F	L50S *
XL70F	L70S *

\* Check specific mounting dimensions before substituting.

† Check characteristics and dimensions for application before substituting.

§ Verify voltage for DC applications.

For more information or a complete listing of high-speed fuses offered visit [Littelfuse.com/POWR-SPEED](http://Littelfuse.com/POWR-SPEED) or call 1-800-TEC-FUSE.

# Expertise Applied | Answers Delivered

Advanced manufacturing  
assure predictable quality



Circuit protection experts offer  
application and design help



Knowledgeable customer  
service team



Products in stock and  
ship in 48 hours.



## White Papers and Additional Technical Information

Littelfuse is committed to developing technical resources that help improve electrical safety and product knowledge. Gain access to Technical Application Guides, White Papers, and a library of information at [littelfuse.com/technicalcenter](http://littelfuse.com/technicalcenter).



### Motor Protection

Effective motor protection is critical in today's highly automated industrial facilities. POWR-GARD® fuses and protection relays provide optimum protection for motors in main, feeder, and branch circuits.



### SCCR

The NEC® requires Industrial Control Panels be labeled with their Short-Circuit Current Rating so users and inspectors can compare their equipment to available fault currents to avoid potential hazards.



### Transformer Protection

POWR-GARD fuses provide optimal overcurrent protection for both the primary and secondary of control transformers and other regular transformers above and below 600 volts.



### Arc-Flash Protection

Arc-flash protection relays are intelligent controllers that safeguard equipment and personnel to prevent damage, downtime or injury due to arc flash.



### Medium Voltage Fuse Protection

POWR-GARD medium voltage fuses provide short-circuit protection for motors and transformers rated 2,400 to 38,000 Vac.



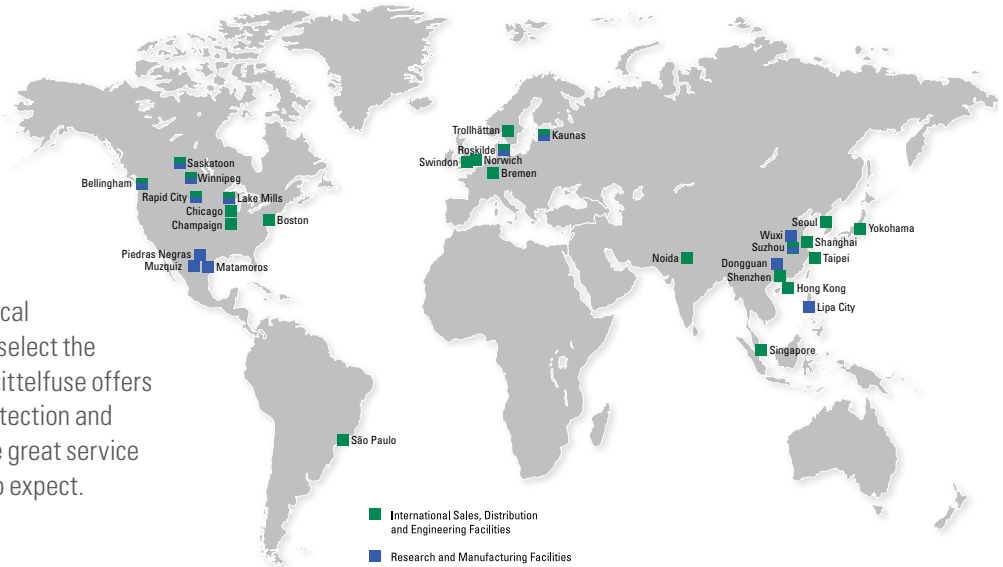
### Overvoltage Suppression Basics

Overvoltage conditions are an increasing concern in the electrical industry. Littelfuse has a diverse portfolio of circuit protection technologies to protect against voltage transients in multiple applications.

# Local Resources for a **GLOBAL** Market

Littelfuse products help protect electrical equipment used in marine, mining, petrochem and general industrial applications. We offer a broad and reliable selection of fuses, fuse blocks, protection relays and generator controls to improve safety and reduce downtime.

For decades, we have helped OEMs, electrical installers, design engineers and end-users select the right product for their applications. Today, Littelfuse offers a broader range of products addressing protection and control needs while still providing the same great service and support that customers have learned to expect.



#### **Littelfuse World Headquarters**

8755 West Higgins Road, Suite 500  
Chicago, IL 60631  
USA  
Tel: +1-800-832-3873  
Fax: +1-847-787-5190  
E-mail: [techline@littelfuse.com](mailto:techline@littelfuse.com)

#### **Littelfuse Startco**

3714 Kinnear Place  
Saskatoon, SK S7P 0A6  
Canada  
Tel: +1-306-373-5505  
Fax: +1-306-374-2245  
E-mail: [relays@littelfuse.com](mailto:relays@littelfuse.com)

#### **Littelfuse SymCom, Inc.**

222 Disk Drive  
Rapid City, SD 57701  
USA  
Tel: +1-800-843-8848  
Fax: +1-605-348-5685  
E-mail: [customerservice@symcom.com](mailto:customerservice@symcom.com)



## WWW.LITTELFUSE.COM/HIGHSPEED



### **A Full Line of Catalogs:**

#### **Protection Relays & Controls Catalog (PF130N)**

The comprehensive line of electronic and microprocessor-based protection relays safeguard equipment and personnel to prevent expensive damage, downtime or injury due to electrical faults.

#### **POWR-GARD® Solar Catalog (PF140N)**

POWR-GARD Solar Products are designed specifically for photovoltaic applications where issues such as heat, efficiency, longevity and global standards impact the choices in selecting circuit protection.

#### **SymCom/SSAC Catalogs**

SymCom and SSAC are leaders in electronic control and protection for all types and sizes of motors, pumps, timers and flashers used in many applications.



To view all Littelfuse product catalogs, visit our website at [littelfuse.com/Catalogs](http://littelfuse.com/Catalogs)

Specifications, descriptions and illustrative material in this literature are as accurate as known at the time of publication, but are subject to changes without notice. Visit [littelfuse.com](http://littelfuse.com) for the most up-to-date technical information.

© 2016 Littelfuse, Inc. Printed in USA.

Form: PF611  
Rev: 1-B-072616